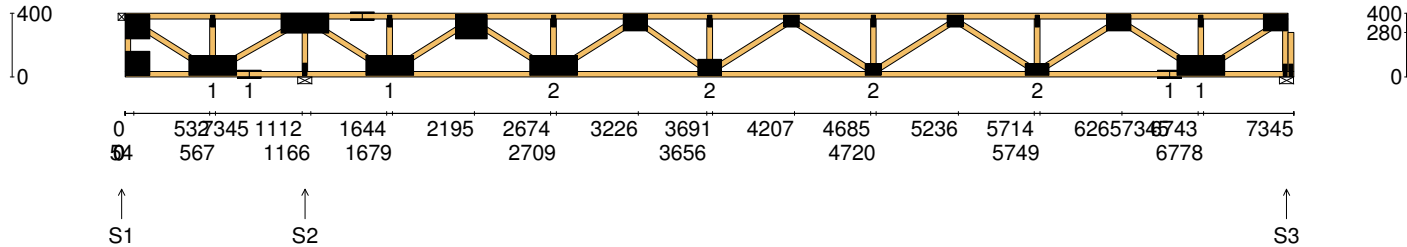


| | | |
|---|---|--------------------------------|
| Client: D'ANDREA | Trusstech SA Pty Ltd 16 High St., Dry Creek, SA 5094 Joist Name: FT1 Type: SJ 400 Joists: FT1, FT2, FT3, FT4 | Job No: TT09730 |
| Site: 541 ANZAC GLENELG HWY EAST GLENELG SA 5045 AUS | | Weight: 48.34 kg |
| Ref: DWELLING 4 | | Total Weight: 193.35 kg |
| | | Laminations: 1 |



TIMBER / PLATES

| Member | Size | Plating | Restraint |
|--------|--------------------|---------|-----------|
| BC1 | 90x35-MGP10 H0 ADS | JD5 | 600 |
| LEW1 | 90x35-MGP10 H0 ADS | JD5 | |
| TC1 | 90x35-MGP10 H0 ADS | JD5 | 300 |
| W1 | 90x35-MGP10 H0 ADS | JD5 | |
| W2 | 90x35-MGP10 H0 ADS | JD5 | |
| W3 | 90x35-MGP10 H0 ADS | JD5 | |
| BC2 | 90x35-MGP10 H0 ADS | JD5 | 600 |
| W4 | 90x35-MGP10 H0 ADS | JD5 | |
| W5 | 90x35-MGP10 H0 ADS | JD5 | |
| TC2 | 90x35-MGP10 H0 ADS | JD5 | 300 |
| W6 | 90x35-MGP10 H0 ADS | JD5 | |
| W7 | 90x35-MGP10 H0 ADS | JD5 | |
| W8 | 90x35-MGP10 H0 ADS | JD5 | |


- 17 more members were not shown -

Vertical Reactions at Supports

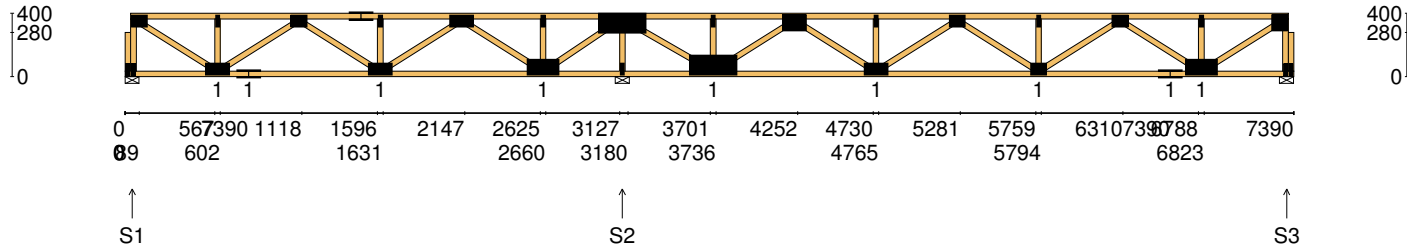
| | S1 | S2 | S3 |
|--------------------|-------|-------|------|
| 1.35DL (kN) | -0.83 | 2.41 | 0.84 |
| 1.2DL + 1.5LL (kN) | -4.22 | 12.04 | 4.14 |

| Joint | Nail Plate | Joint | Nail Plate |
|-------|------------|-------|------------|
| T1 | 150x150-MN | T8 | 100x150-MN |
| BL1 | 150x150-MN | B6 | 100x150-MN |
| B1 | 125x300-MN | T9 | 25x75-MN |
| T2 | 25x75-MN | T10 | 75x100-MN |
| B2 | 75x150-MN | B7 | 75x100-MN |
| T3 | 125x300-MN | T11 | 25x75-MN |
| B3 | 25x75-MN | T12 | 75x100-MN |
| T4 | 75x150-MN | B8 | 75x150-MN |
| B4 | 125x300-MN | T13 | 25x75-MN |
| T5 | 25x75-MN | T14 | 100x150-MN |
| T6 | 150x200-MN | B9 | 75x150-MN |
| B5 | 125x300-MN | B10 | 125x300-MN |
| T7 | 25x75-MN | BR1-1 | 25x75-MN |

- 3 more nail plates were not shown -

| | | | | | |
|----------------------|---|-----------------------------------|--|---|--------------------|
| Span: 7345 | Floor Material: Particle (15.4 kg/m²) | Application: General Areas | All dimensions in millimetres. This drawing should be read in conjunction with Multinail Technical sheets. Wall plates must be placed at supports only. | Marc Houldsworth (TN-016-020) | |
| Overhang: 0/0 | Floor Covering: Std Carpet + Underlay (8 kg/m²) | Live Load: 1.5 kPa | | Ver: | Floor 1.9.3 |
| Spacing: 600 | Ceiling Material: Plaster 10mm Supa Span (8.2 kg/m²) | Point Load: 1.8 kN |  | Date: | 28/05/2018 |
| Quantity: 4 | Ceiling Fixing: Metal direct @ 600c | Design: AS 1720.1-2010 | | Page: | 1 of 20 |

| | | |
|---|--|-------------------------------|
| Client: D'ANDREA | Trusstech SA Pty Ltd 16 High St., Dry Creek, SA 5094 Joist Name: FT2 Type: SJ 400 Joists: FT5 | Job No: TT09730 |
| Site: 541 ANZAC GLENELG HWY EAST GLENELG SA 5045 AUS | | Weight: 46.56 kg |
| Ref: DWELLING 4 | | Total Weight: 46.56 kg |
| | | Laminations: 1 |



TIMBER / PLATES

| Member | Size | Plating | Restraint |
|---------|--------------------|---------|-----------|
| BC1 | 90x35-MGP10 H0 ADS | JD5 | 600 |
| LBlock1 | 90x35-MGP10 H0 ADS | JD5 | |
| LEW1 | 90x35-MGP10 H0 ADS | JD5 | |
| TC1 | 90x35-MGP10 H0 ADS | JD5 | 300 |
| W1 | 90x35-MGP10 H0 ADS | JD5 | |
| W2 | 90x35-MGP10 H0 ADS | JD5 | |
| W3 | 90x35-MGP10 H0 ADS | JD5 | |
| BC2 | 90x35-MGP10 H0 ADS | JD5 | 600 |
| W4 | 90x35-MGP10 H0 ADS | JD5 | |
| TC2 | 90x35-MGP10 H0 ADS | JD5 | 300 |
| W5 | 90x35-MGP10 H0 ADS | JD5 | |
| W6 | 90x35-MGP10 H0 ADS | JD5 | |
| W7 | 90x35-MGP10 H0 ADS | JD5 | |


- 18 more members were not shown -

Vertical Reactions at Supports

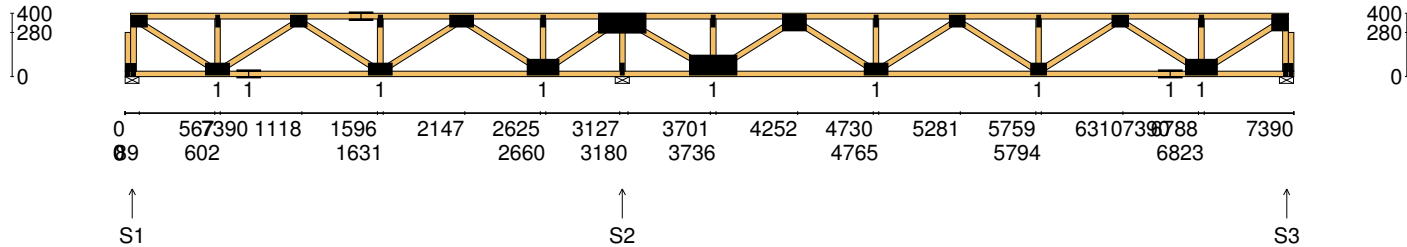
| | S1 | S2 | S3 |
|--------------------|------|------|------|
| 1.35DL (kN) | 0.34 | 1.50 | 0.57 |
| 1.2DL + 1.5LL (kN) | 1.67 | 7.50 | 2.81 |

| Joint | Nail Plate | Joint | Nail Plate |
|-------|------------|-------|------------|
| BL1-1 | 25x75-MN | T8 | 125x300-MN |
| T1 | 75x100-MN | B5 | 25x75-MN |
| BL1 | 25x75-MN | B6 | 125x300-MN |
| B1 | 75x150-MN | T9 | 25x75-MN |
| T2 | 25x75-MN | T10 | 100x150-MN |
| B2 | 75x150-MN | B7 | 75x150-MN |
| T3 | 75x100-MN | T11 | 25x75-MN |
| T4 | 75x150-MN | T12 | 75x100-MN |
| B3 | 75x150-MN | B8 | 75x100-MN |
| T5 | 25x75-MN | T13 | 25x75-MN |
| T6 | 75x150-MN | T14 | 75x100-MN |
| B4 | 100x200-MN | B9 | 75x150-MN |
| T7 | 25x75-MN | BR1-1 | 25x75-MN |

- 4 more nail plates were not shown -

| | | | | | |
|----------------------|---|-----------------------------------|--|---|--|
| Span: 7390 | Floor Material: Particle (15.4 kg/m²) | Application: General Areas | All dimensions in millimetres. This drawing should be read in conjunction with Multinail Technical sheets. Wall plates must be placed at supports only. | Marc Houldsworth (TN-016-020) | |
| Overhang: 0/0 | Floor Covering: Std Carpet + Underlay (8 kg/m²) | Live Load: 1.5 kPa | | Ver: Floor 1.9.3 | |
| Spacing: 600 | Ceiling Material: Plaster 10mm Supa Span (8.2 kg/m²) | Point Load: 1.8 kN |  | Date: 28/05/2018 | |
| Quantity: 1 | Ceiling Fixing: Metal direct @ 600c | Design: AS 1720.1-2010 | | Page: 2 of 20 | |

| | | |
|---|--|-------------------------------|
| Client: D'ANDREA | Trusstech SA Pty Ltd 16 High St., Dry Creek, SA 5094 | Job No: TT09730 |
| Site: 541 ANZAC GLENELG HWY EAST GLENELG SA 5045 AUS | | Weight: 46.56 kg |
| Ref: DWELLING 4 | Joist Name: FT2 Type: SJ 400 Joists: FT6 | Total Weight: 46.56 kg |
| | | Laminations: 1 |



TIMBER / PLATES

| Member | Size | Plating | Restraint |
|---------|--------------------|---------|-----------|
| BC1 | 90x35-MGP10 H0 ADS | JD5 | 600 |
| LBlock1 | 90x35-MGP10 H0 ADS | JD5 | |
| LEW1 | 90x35-MGP10 H0 ADS | JD5 | |
| TC1 | 90x35-MGP10 H0 ADS | JD5 | 300 |
| W1 | 90x35-MGP10 H0 ADS | JD5 | |
| W2 | 90x35-MGP10 H0 ADS | JD5 | |
| W3 | 90x35-MGP10 H0 ADS | JD5 | |
| BC2 | 90x35-MGP10 H0 ADS | JD5 | 600 |
| W4 | 90x35-MGP10 H0 ADS | JD5 | |
| TC2 | 90x35-MGP10 H0 ADS | JD5 | 300 |
| W5 | 90x35-MGP10 H0 ADS | JD5 | |
| W6 | 90x35-MGP10 H0 ADS | JD5 | |
| W7 | 90x35-MGP10 H0 ADS | JD5 | |


- 18 more members were not shown -

Vertical Reactions at Supports

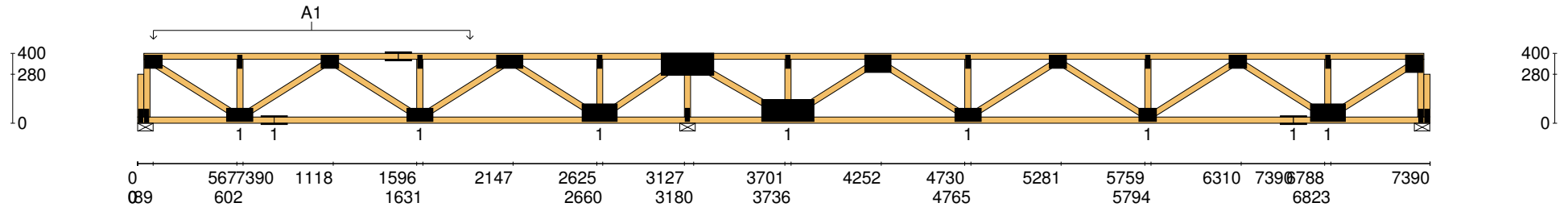
| | S1 | S2 | S3 |
|--------------------|------|------|------|
| 1.35DL (kN) | 0.53 | 1.61 | 0.56 |
| 1.2DL + 1.5LL (kN) | 1.84 | 7.60 | 2.80 |

| Joint | Nail Plate | Joint | Nail Plate |
|-------|------------|-------|------------|
| BL1-1 | 25x75-MN | T8 | 125x300-MN |
| T1 | 75x100-MN | B5 | 25x75-MN |
| BL1 | 25x75-MN | B6 | 125x300-MN |
| B1 | 75x150-MN | T9 | 25x75-MN |
| T2 | 25x75-MN | T10 | 100x150-MN |
| B2 | 75x150-MN | B7 | 75x150-MN |
| T3 | 75x100-MN | T11 | 25x75-MN |
| T4 | 75x150-MN | T12 | 75x100-MN |
| B3 | 75x150-MN | B8 | 75x100-MN |
| T5 | 25x75-MN | T13 | 25x75-MN |
| T6 | 75x150-MN | T14 | 75x100-MN |
| B4 | 100x200-MN | B9 | 75x150-MN |
| T7 | 25x75-MN | BR1-1 | 25x75-MN |


- 4 more nail plates were not shown -

| | | | | | |
|----------------------|---|-----------------------------------|--|---|--|
| Span: 7390 | Floor Material: Particle (15.4 kg/m²) | Application: General Areas | All dimensions in millimetres. This drawing should be read in conjunction with Multinail Technical sheets. Wall plates must be placed at supports only. | Marc Houldsworth (TN-016-020) | |
| Overhang: 0/0 | Floor Covering: Std Carpet + Underlay (8 kg/m²) | Live Load: 1.5 kPa | | Ver: Floor 1.9.3 | |
| Spacing: 600 | Ceiling Material: Plaster 10mm Supa Span (8.2 kg/m²) | Point Load: 1.8 kN |  | Date: 28/05/2018 | |
| Quantity: 1 | Ceiling Fixing: Metal direct @ 600c | Design: AS 1720.1-2010 | | Page: 3 of 20 | |

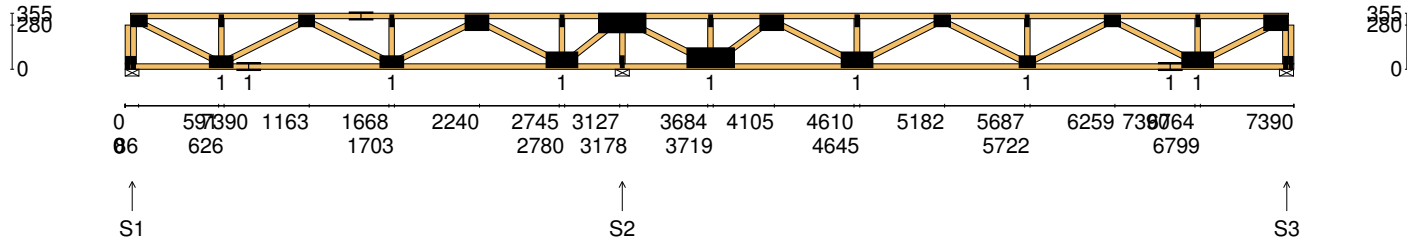
| | | |
|---|--|-------------------------------|
| Client: D'ANDREA | Trusstech SA Pty Ltd 16 High St., Dry Creek, SA 5094 | Job No: TT09730 |
| Site: 541 ANZAC GLENELG HWY EAST GLENELG SA 5045 AUS | | Weight: 46.56 kg |
| Ref: DWELLING 4 | Joist Name: FT2 Type: SJ 400 Joists: FT6 | Total Weight: 46.56 kg |
| | | Laminations: 1 |



| | |
|-----------------------|-------------------------------|
| User Def. Load | A1 43.50 kg/m ² |
| Applied Load | |
| DL (kN) | |
| LL (kN) | |
| WL Up (kN) | |
| WL Dn (kN) | |

| | | | | |
|----------------------|--|-----------------------------------|--|---|
| Span: 7390 | Floor Material: Particle (15.4 kg/m²) | Application: General Areas | All dimensions in millimetres. This drawing should be read in conjunction with Multinail Technical sheets. Wall plates must be placed at supports only. | Marc Houldsworth (TN-016-020) |
| Overhang: 0/0 | Floor Covering: Std Carpet + Underlay (8 kg/m²) | Live Load: 1.5 kPa | | Ver: Floor 1.9.3 |
| Spacing: 600 | Ceiling Material: Plaster 10mm Supa Span (8.2 kg/m²) | Point Load: 1.8 kN |  | Date: 28/05/2018 |
| Quantity: 1 | Ceiling Fixing: Metal direct @ 600c | Design: AS 1720.1-2010 | | Page: 4 of 20 |

| | | |
|---|--|-------------------------------|
| Client: D'ANDREA | Trusstech SA Pty Ltd 16 High St., Dry Creek, SA 5094 Joist Name: FT3 Type: SJ 355 Joists: FT7 | Job No: TT09730 |
| Site: 541 ANZAC GLENELG HWY EAST GLENELG SA 5045 AUS | | Weight: 45.67 kg |
| Ref: DWELLING 4 | | Total Weight: 45.67 kg |
| | | Laminations: 1 |



TIMBER / PLATES

| Member | Size | Plating | Restraint |
|---------|--------------------|---------|-----------|
| BC1 | 90x35-MGP10 H0 ADS | JD5 | 600 |
| LBlock1 | 90x35-MGP10 H0 ADS | JD5 | |
| LEW1 | 90x35-MGP10 H0 ADS | JD5 | |
| TC1 | 90x35-MGP10 H0 ADS | JD5 | 300 |
| W1 | 90x35-MGP10 H0 ADS | JD5 | |
| W2 | 90x35-MGP10 H0 ADS | JD5 | |
| W3 | 90x35-MGP10 H0 ADS | JD5 | |
| BC2 | 90x35-MGP10 H0 ADS | JD5 | 600 |
| W4 | 90x35-MGP10 H0 ADS | JD5 | |
| TC2 | 90x35-MGP10 H0 ADS | JD5 | 300 |
| W5 | 90x35-MGP10 H0 ADS | JD5 | |
| W6 | 90x35-MGP10 H0 ADS | JD5 | |
| W7 | 90x35-MGP10 H0 ADS | JD5 | |


- 18 more members were not shown -

Vertical Reactions at Supports

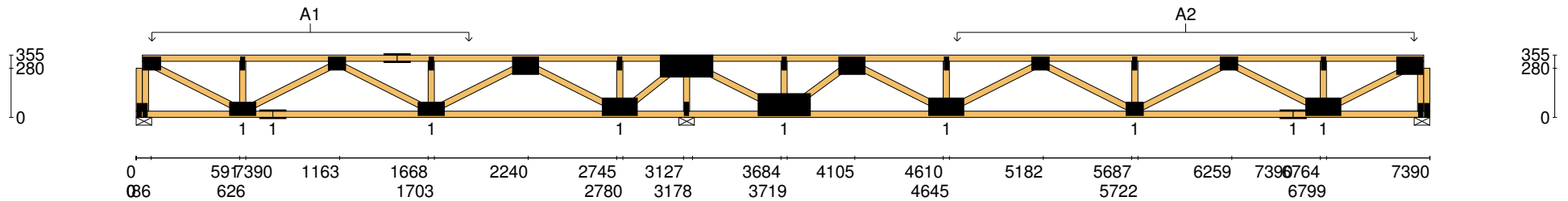
| | S1 | S2 | S3 |
|--------------------|------|------|------|
| 1.35DL (kN) | 0.48 | 1.81 | 0.81 |
| 1.2DL + 1.5LL (kN) | 1.79 | 7.80 | 3.01 |

| Joint | Nail Plate | Joint | Nail Plate |
|-------|------------|-------|------------|
| BL1-1 | 25x75-MN | T8 | 125x300-MN |
| T1 | 75x100-MN | B5 | 25x75-MN |
| BL1 | 25x75-MN | B6 | 125x300-MN |
| B1 | 75x150-MN | T9 | 25x75-MN |
| T2 | 25x75-MN | T10 | 100x150-MN |
| B2 | 75x150-MN | B7 | 100x200-MN |
| T3 | 75x100-MN | T11 | 25x75-MN |
| T4 | 75x150-MN | T12 | 75x100-MN |
| B3 | 75x150-MN | B8 | 75x100-MN |
| T5 | 25x75-MN | T13 | 25x75-MN |
| T6 | 100x150-MN | T14 | 75x100-MN |
| B4 | 100x200-MN | B9 | 75x150-MN |
| T7 | 25x75-MN | BR1-1 | 25x75-MN |

- 4 more nail plates were not shown -

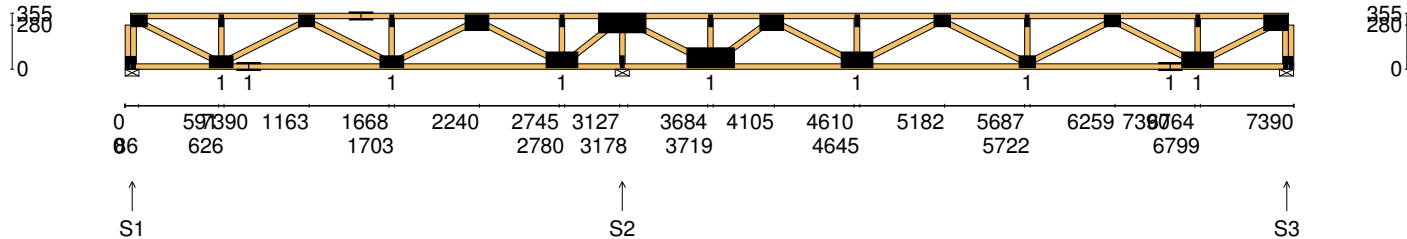
| | | | | | |
|----------------------|---|-----------------------------------|--|---|--------------------|
| Span: 7390 | Floor Material: Particle (15.4 kg/m²) | Application: General Areas | All dimensions in millimetres. This drawing should be read in conjunction with Multinail Technical sheets. Wall plates must be placed at supports only. | Marc Houldsworth (TN-016-020) | |
| Overhang: 0/0 | Floor Covering: Std Carpet + Underlay (8 kg/m²) | Live Load: 1.5 kPa | | Ver: | Floor 1.9.3 |
| Spacing: 600 | Ceiling Material: Plaster 10mm Supa Span (8.2 kg/m²) | Point Load: 1.8 kN |  | Date: | 28/05/2018 |
| Quantity: 1 | Ceiling Fixing: Metal direct @ 600c | Design: AS 1720.1-2010 | | Page: | 5 of 20 |

| | | |
|---|--|-------------------------------|
| Client: D'ANDREA | Trusstech SA Pty Ltd 16 High St., Dry Creek, SA 5094 | Job No: TT09730 |
| Site: 541 ANZAC GLENELG HWY EAST GLENELG SA 5045 AUS | | Weight: 45.67 kg |
| Ref: DWELLING 4 | Joist Name: FT3 Type: SJ 355 Joists: FT7 | Total Weight: 45.67 kg |
| | | Laminations: 1 |



| | | | |
|--|------|--|-----------------------------------|
| User Def. Load | | A1 | A2 |
| | | 43.50 kg/m ² | 43.50 kg/m ² |
| Applied Load | | | |
| DL | (kN) | | |
| LL | (kN) | | |
| WL Up | (kN) | | |
| WL Dn | (kN) | | |
| Span: | 7390 | Floor Material: Particle (15.4 kg/m²) | Application: General Areas |
| Overhang: | 0/0 | Floor Covering: Std Carpet + Underlay (8 kg/m²) | Live Load: 1.5 kPa |
| Spacing: | 600 | Ceiling Material: Plaster 10mm Supa Span (8.2 kg/m²) | Point Load: 1.8 kN |
| Quantity: | 1 | Ceiling Fixing: Metal direct @ 600c | Design: AS 1720.1-2010 |
| <div> <div>All dimensions in millimetres. This drawing should be read in conjunction with Multinail Technical sheets. Wall plates must be placed at supports only.</div> <div> </div> </div> | | | |
| | | Marc Houldsworth (TN-016-020) | |
| | | Ver: | Floor 1.9.3 |
| | | Date: | 28/05/2018 |
| | | Page: | 6 of 20 |

| | | |
|---|--|-------------------------------|
| Client: D'ANDREA | Trusstech SA Pty Ltd 16 High St., Dry Creek, SA 5094 | Job No: TT09730 |
| Site: 541 ANZAC GLENELG HWY EAST GLENELG SA 5045 AUS | | Weight: 45.67 kg |
| Ref: DWELLING 4 | Joist Name: FT3 Type: SJ 355 Joists: FT8 | Total Weight: 45.67 kg |
| | | Laminations: 1 |



TIMBER / PLATES

| Member | Size | Plating | Restraint |
|---------|--------------------|---------|-----------|
| BC1 | 90x35-MGP10 H0 ADS | JD5 | 600 |
| LBlock1 | 90x35-MGP10 H0 ADS | JD5 | |
| LEW1 | 90x35-MGP10 H0 ADS | JD5 | |
| TC1 | 90x35-MGP10 H0 ADS | JD5 | 300 |
| W1 | 90x35-MGP10 H0 ADS | JD5 | |
| W2 | 90x35-MGP10 H0 ADS | JD5 | |
| W3 | 90x35-MGP10 H0 ADS | JD5 | |
| BC2 | 90x35-MGP10 H0 ADS | JD5 | 600 |
| W4 | 90x35-MGP10 H0 ADS | JD5 | |
| TC2 | 90x35-MGP10 H0 ADS | JD5 | 300 |
| W5 | 90x35-MGP10 H0 ADS | JD5 | |
| W6 | 90x35-MGP10 H0 ADS | JD5 | |
| W7 | 90x35-MGP10 H0 ADS | JD5 | |


- 18 more members were not shown -

Vertical Reactions at Supports

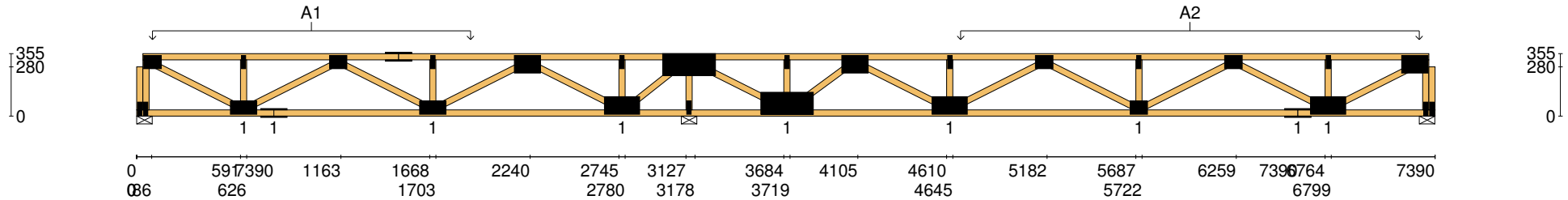
| | S1 | S2 | S3 |
|--------------------|------|------|------|
| 1.35DL (kN) | 0.48 | 1.81 | 0.81 |
| 1.2DL + 1.5LL (kN) | 1.79 | 7.80 | 3.01 |

| Joint | Nail Plate | Joint | Nail Plate |
|-------|------------|-------|------------|
| BL1-1 | 25x75-MN | T8 | 125x300-MN |
| T1 | 75x100-MN | B5 | 25x75-MN |
| BL1 | 25x75-MN | B6 | 125x300-MN |
| B1 | 75x150-MN | T9 | 25x75-MN |
| T2 | 25x75-MN | T10 | 100x150-MN |
| B2 | 75x150-MN | B7 | 100x200-MN |
| T3 | 75x100-MN | T11 | 25x75-MN |
| T4 | 75x150-MN | T12 | 75x100-MN |
| B3 | 75x150-MN | B8 | 75x100-MN |
| T5 | 25x75-MN | T13 | 25x75-MN |
| T6 | 100x150-MN | T14 | 75x100-MN |
| B4 | 100x200-MN | B9 | 75x150-MN |
| T7 | 25x75-MN | BR1-1 | 25x75-MN |

- 4 more nail plates were not shown -

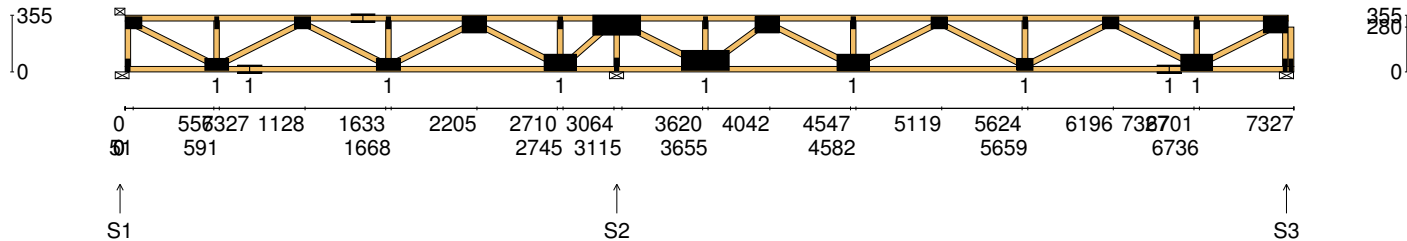
| | | | | |
|----------------------|--|-----------------------------------|--|---|
| Span: 7390 | Floor Material: Particle (15.4 kg/m²) | Application: General Areas | All dimensions in millimetres. This drawing should be read in conjunction with Multinail Technical sheets. Wall plates must be placed at supports only. | Marc Houldsworth (TN-016-020) |
| Overhang: 0/0 | Floor Covering: Std Carpet + Underlay (8 kg/m²) | Live Load: 1.5 kPa | | Ver: Floor 1.9.3 |
| Spacing: 600 | Ceiling Material: Plaster 10mm Supa Span (8.2 kg/m²) | Point Load: 1.8 kN |  | Date: 28/05/2018 |
| Quantity: 1 | Ceiling Fixing: Metal direct @ 600c | Design: AS 1720.1-2010 | | Page: 7 of 20 |

| | | |
|---|--|-------------------------------|
| Client: D'ANDREA | Trusstech SA Pty Ltd 16 High St., Dry Creek, SA 5094 | Job No: TT09730 |
| Site: 541 ANZAC GLENELG HWY EAST GLENELG SA 5045 AUS | | Weight: 45.67 kg |
| Ref: DWELLING 4 | Joist Name: FT3 Type: SJ 355 Joists: FT8 | Total Weight: 45.67 kg |
| | | Laminations: 1 |



| | | | |
|---|------|-------------------------|---|
| User Def. Load | | A1 | A2 |
| | | 43.50 kg/m ² | 43.50 kg/m ² |
| Applied Load | | | |
| DL | (kN) | | |
| LL | (kN) | | |
| WL Up | (kN) | | |
| WL Dn | (kN) | | |
| Span: | 7390 | Floor Material: | Particle (15.4 kg/m ²) |
| Overhang: | 0/0 | Floor Covering: | Std Carpet + Underlay (8 kg/m ²) |
| Spacing: | 600 | Ceiling Material: | Plaster 10mm Supa Span (8.2 kg/m ²) |
| Quantity: | 1 | Ceiling Fixing: | Metal direct @ 600c |
| | | Application: | General Areas |
| | | Live Load: | 1.5 kPa |
| | | Point Load: | 1.8 kN |
| | | Design: | AS 1720.1-2010 |
| All dimensions in millimetres. This drawing should be read in conjunction with Multinail Technical sheets. Wall plates must be placed at supports only. | | | |
| | | | |
| | | | |
| | | | |
| | | | Marc Houldsworth (TN-016-020) |
| | | | Ver: Floor 1.9.3 |
| | | | Date: 28/05/2018 |
| | | | Page: 8 of 20 |

| | | |
|---|--|-------------------------------|
| Client: D'ANDREA | Trusstech SA Pty Ltd 16 High St., Dry Creek, SA 5094 | Job No: TT09730 |
| Site: 541 ANZAC GLENELG HWY EAST GLENELG SA 5045 AUS | | Weight: 45.07 kg |
| Ref: DWELLING 4 | Joist Name: FT4 Type: SJ 355 Joists: FT9 | Total Weight: 45.07 kg |
| | | Laminations: 1 |



TIMBER / PLATES

| Member | Size | Plating | Restraint |
|--------|--------------------|---------|-----------|
| BC1 | 90x35-MGP10 H0 ADS | JD5 | 600 |
| LEW1 | 90x35-MGP10 H0 ADS | JD5 | |
| TC1 | 90x35-MGP10 H0 ADS | JD5 | 300 |
| W1 | 90x35-MGP10 H0 ADS | JD5 | |
| W2 | 90x35-MGP10 H0 ADS | JD5 | |
| W3 | 90x35-MGP10 H0 ADS | JD5 | |
| BC2 | 90x35-MGP10 H0 ADS | JD5 | 600 |
| W4 | 90x35-MGP10 H0 ADS | JD5 | |
| TC2 | 90x35-MGP10 H0 ADS | JD5 | 300 |
| W5 | 90x35-MGP10 H0 ADS | JD5 | |
| W6 | 90x35-MGP10 H0 ADS | JD5 | |
| W7 | 90x35-MGP10 H0 ADS | JD5 | |
| W8 | 90x35-MGP10 H0 ADS | JD5 | |


- 17 more members were not shown -

Vertical Reactions at Supports

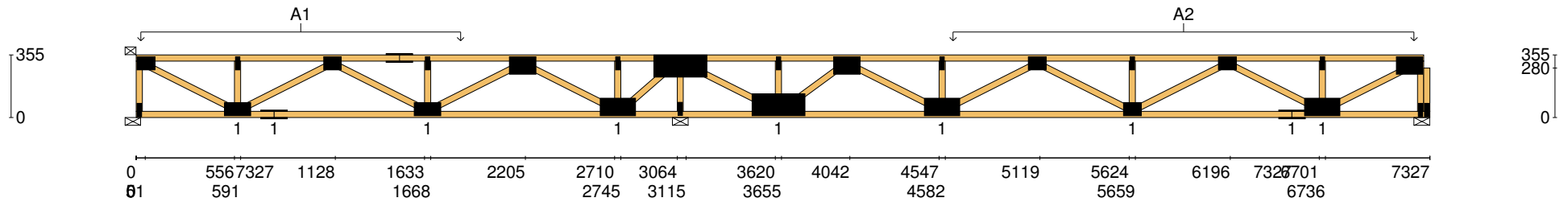
| | S1 | S2 | S3 |
|--------------------|------|------|------|
| 1.35DL (kN) | 0.48 | 1.81 | 0.81 |
| 1.2DL + 1.5LL (kN) | 1.76 | 7.77 | 3.01 |

| Joint | Nail Plate | Joint | Nail Plate |
|-------|------------|-------|------------|
| T1 | 75x100-MN | B5 | 25x75-MN |
| BL1 | 25x75-MN | B6 | 125x300-MN |
| B1 | 75x150-MN | T9 | 25x75-MN |
| T2 | 25x75-MN | T10 | 100x150-MN |
| B2 | 75x150-MN | B7 | 100x200-MN |
| T3 | 75x100-MN | T11 | 25x75-MN |
| T4 | 75x150-MN | T12 | 75x100-MN |
| B3 | 75x150-MN | B8 | 75x100-MN |
| T5 | 25x75-MN | T13 | 25x75-MN |
| T6 | 100x150-MN | T14 | 75x100-MN |
| B4 | 100x200-MN | B9 | 75x150-MN |
| T7 | 25x75-MN | B10 | 100x200-MN |
| T8 | 125x300-MN | BR1-1 | 25x75-MN |

- 3 more nail plates were not shown -


| | | | | |
|----------------------|--|-----------------------------------|--|---|
| Span: 7327 | Floor Material: Particle (15.4 kg/m²) | Application: General Areas | All dimensions in millimetres. This drawing should be read in conjunction with Multinail Technical sheets. Wall plates must be placed at supports only. | Marc Houldsworth (TN-016-020) |
| Overhang: 0/0 | Floor Covering: Std Carpet + Underlay (8 kg/m²) | Live Load: 1.5 kPa | | Ver: Floor 1.9.3 |
| Spacing: 600 | Ceiling Material: Plaster 10mm Supa Span (8.2 kg/m²) | Point Load: 1.8 kN |  | Date: 28/05/2018 |
| Quantity: 1 | Ceiling Fixing: Metal direct @ 600c | Design: AS 1720.1-2010 | | Page: 9 of 20 |

| | | |
|---|--|-------------------------------|
| Client: D'ANDREA | Trusstech SA Pty Ltd 16 High St., Dry Creek, SA 5094 | Job No: TT09730 |
| Site: 541 ANZAC GLENELG HWY EAST GLENELG SA 5045 AUS | | Weight: 45.07 kg |
| Ref: DWELLING 4 | Joist Name: FT4 Type: SJ 355 Joists: FT9 | Total Weight: 45.07 kg |
| | | Laminations: 1 |

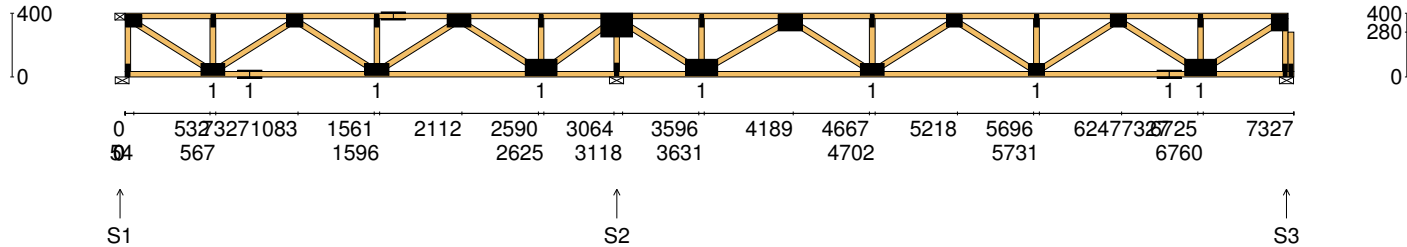


| | | |
|-----------------------|-------------------------|-------------------------|
| User Def. Load | A1 | A2 |
| | 43.50 kg/m ² | 43.50 kg/m ² |

Applied Load
DL (kN)
LL (kN)
WL Up (kN)
WL Dn (kN)

| | | | | |
|----------------------|--|-----------------------------------|--|---|
| Span: 7327 | Floor Material: Particle (15.4 kg/m²) | Application: General Areas | All dimensions in millimetres. This drawing should be read in conjunction with Multinail Technical sheets. Wall plates must be placed at supports only. | Marc Houldsworth (TN-016-020) |
| Overhang: 0/0 | Floor Covering: Std Carpet + Underlay (8 kg/m²) | Live Load: 1.5 kPa | | Ver: Floor 1.9.3 |
| Spacing: 600 | Ceiling Material: Plaster 10mm Supa Span (8.2 kg/m²) | Point Load: 1.8 kN |  | Date: 28/05/2018 |
| Quantity: 1 | Ceiling Fixing: Metal direct @ 600c | Design: AS 1720.1-2010 | | Page: 10 of 20 |

| | | |
|---|--|--------------------------------|
| Client: D'ANDREA | Trusstech SA Pty Ltd 16 High St., Dry Creek, SA 5094 | Job No: TT09730 |
| Site: 541 ANZAC GLENELG HWY EAST GLENELG SA 5045 AUS | | Weight: 45.50 kg |
| Ref: DWELLING 4 | Joist Name: FT5 Type: SJ 400 | Total Weight: 136.49 kg |
| | Joists: FT10, FT11, FT13 | Laminations: 1 |



TIMBER / PLATES

| Member | Size | Plating | Restraint |
|--------|--------------------|---------|-----------|
| BC1 | 90x35-MGP10 H0 ADS | JD5 | 600 |
| LEW1 | 90x35-MGP10 H0 ADS | JD5 | |
| TC1 | 90x35-MGP10 H0 ADS | JD5 | 300 |
| W1 | 90x35-MGP10 H0 ADS | JD5 | |
| W2 | 90x35-MGP10 H0 ADS | JD5 | |
| W3 | 90x35-MGP10 H0 ADS | JD5 | |
| BC2 | 90x35-MGP10 H0 ADS | JD5 | 600 |
| W4 | 90x35-MGP10 H0 ADS | JD5 | |
| W5 | 90x35-MGP10 H0 ADS | JD5 | |
| W6 | 90x35-MGP10 H0 ADS | JD5 | |
| TC2 | 90x35-MGP10 H0 ADS | JD5 | 300 |
| W7 | 90x35-MGP10 H0 ADS | JD5 | |
| W8 | 90x35-MGP10 H0 ADS | JD5 | |


- 17 more members were not shown -

Vertical Reactions at Supports

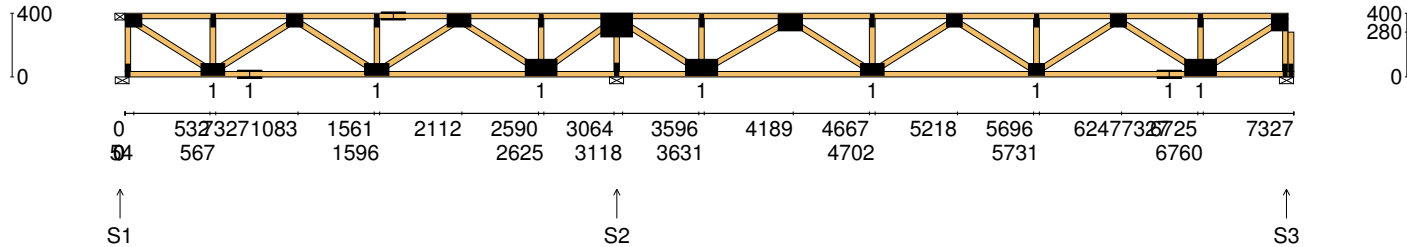
| | S1 | S2 | S3 |
|--------------------|------|------|------|
| 1.35DL (kN) | 0.33 | 1.50 | 0.57 |
| 1.2DL + 1.5LL (kN) | 1.64 | 7.48 | 2.81 |

| Joint | Nail Plate | Joint | Nail Plate |
|-------|------------|-------|------------|
| T1 | 75x100-MN | B5 | 25x75-MN |
| BL1 | 25x75-MN | B6 | 100x200-MN |
| B1 | 75x150-MN | T9 | 25x75-MN |
| T2 | 25x75-MN | T10 | 100x150-MN |
| B2 | 75x150-MN | B7 | 75x150-MN |
| T3 | 75x100-MN | T11 | 25x75-MN |
| B3 | 75x150-MN | T12 | 75x100-MN |
| T4 | 25x75-MN | B8 | 75x100-MN |
| T5 | 75x150-MN | T13 | 25x75-MN |
| T6 | 75x150-MN | T14 | 75x100-MN |
| B4 | 100x200-MN | B9 | 75x150-MN |
| T7 | 25x75-MN | B10 | 100x200-MN |
| T8 | 150x200-MN | BR1-1 | 25x75-MN |

- 3 more nail plates were not shown -

| | | | | | |
|----------------------|---|-----------------------------------|--|---|--|
| Span: 7327 | Floor Material: Particle (15.4 kg/m²) | Application: General Areas | All dimensions in millimetres. This drawing should be read in conjunction with Multinail Technical sheets. Wall plates must be placed at supports only. | Marc Houldsworth (TN-016-020) | |
| Overhang: 0/0 | Floor Covering: Std Carpet + Underlay (8 kg/m²) | Live Load: 1.5 kPa | | Ver: Floor 1.9.3 | |
| Spacing: 600 | Ceiling Material: Plaster 10mm Supa Span (8.2 kg/m²) | Point Load: 1.8 kN |  | Date: 28/05/2018 | |
| Quantity: 3 | Ceiling Fixing: Metal direct @ 600c | Design: AS 1720.1-2010 | | Page: 11 of 20 | |

| | | |
|---|---|-------------------------------|
| Client: D'ANDREA | Trusstech SA Pty Ltd 16 High St., Dry Creek, SA 5094 Joist Name: FT6 Type: SJ 400 Joists: FT12 | Job No: TT09730 |
| Site: 541 ANZAC GLENELG HWY EAST GLENELG SA 5045 AUS | | Weight: 45.50 kg |
| Ref: DWELLING 4 | | Total Weight: 45.50 kg |
| | | Laminations: 1 |



TIMBER / PLATES

| Member | Size | Plating | Restraint |
|--------|--------------------|---------|-----------|
| BC1 | 90x35-MGP10 H0 ADS | JD5 | 600 |
| LEW1 | 90x35-MGP10 H0 ADS | JD5 | |
| TC1 | 90x35-MGP10 H0 ADS | JD5 | 300 |
| W1 | 90x35-MGP10 H0 ADS | JD5 | |
| W2 | 90x35-MGP10 H0 ADS | JD5 | |
| W3 | 90x35-MGP10 H0 ADS | JD5 | |
| BC2 | 90x35-MGP10 H0 ADS | JD5 | 600 |
| W4 | 90x35-MGP10 H0 ADS | JD5 | |
| W5 | 90x35-MGP10 H0 ADS | JD5 | |
| W6 | 90x35-MGP10 H0 ADS | JD5 | |
| TC2 | 90x35-MGP10 H0 ADS | JD5 | 300 |
| W7 | 90x35-MGP10 H0 ADS | JD5 | |
| W8 | 90x35-MGP10 H0 ADS | JD5 | |


- 17 more members were not shown -

Vertical Reactions at Supports

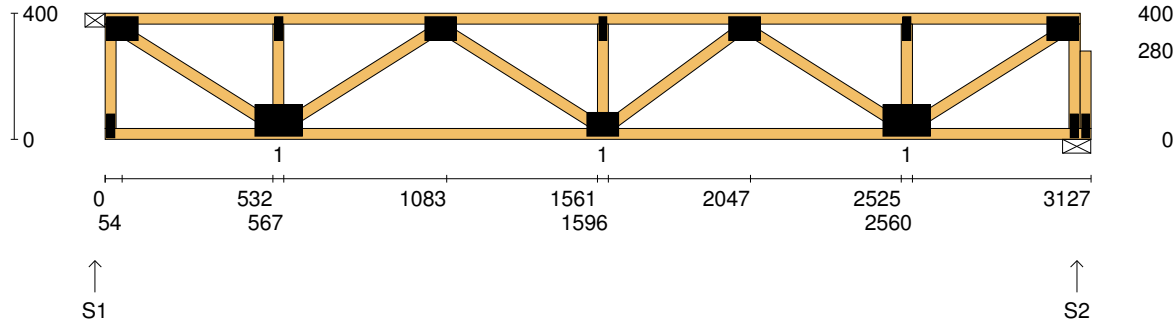
| | S1 | S2 | S3 |
|--------------------|------|------|------|
| 1.35DL (kN) | 0.33 | 1.50 | 0.57 |
| 1.2DL + 1.5LL (kN) | 1.64 | 7.48 | 2.81 |

| Joint | Nail Plate | Joint | Nail Plate |
|-------|------------|-------|------------|
| T1 | 75x100-MN | B5 | 25x75-MN |
| BL1 | 25x75-MN | B6 | 100x200-MN |
| B1 | 75x150-MN | T9 | 25x75-MN |
| T2 | 25x75-MN | T10 | 100x150-MN |
| B2 | 75x150-MN | B7 | 75x150-MN |
| T3 | 75x100-MN | T11 | 25x75-MN |
| B3 | 75x150-MN | T12 | 75x100-MN |
| T4 | 25x75-MN | B8 | 75x100-MN |
| T5 | 75x150-MN | T13 | 25x75-MN |
| T6 | 75x150-MN | T14 | 75x100-MN |
| B4 | 100x200-MN | B9 | 75x150-MN |
| T7 | 25x75-MN | B10 | 100x200-MN |
| T8 | 150x200-MN | BR1-1 | 25x75-MN |

- 3 more nail plates were not shown -

| | | | | | |
|----------------------|---|-----------------------------------|--|---|--|
| Span: 7327 | Floor Material: Particle (15.4 kg/m²) | Application: General Areas | All dimensions in millimetres. This drawing should be read in conjunction with Multinail Technical sheets. Wall plates must be placed at supports only. | Marc Houldsworth (TN-016-020) | |
| Overhang: 0/0 | Floor Covering: Std Carpet + Underlay (8 kg/m²) | Live Load: 1.5 kPa | | Ver: Floor 1.9.3 | |
| Spacing: 600 | Ceiling Material: Plaster 10mm Supa Span (8.2 kg/m²) | Point Load: 1.8 kN |  | Date: 28/05/2018 | |
| Quantity: 1 | Ceiling Fixing: Metal direct @ 600c | Design: AS 1720.1-2010 | | Page: 12 of 20 | |

| | | |
|---|---|-------------------------------|
| Client: D'ANDREA | Trusstech SA Pty Ltd 16 High St., Dry Creek, SA 5094 Joist Name: FT7 Type: SJ 400 Joists: FT14, FT15 | Job No: TT09730 |
| Site: 541 ANZAC GLENELG HWY EAST GLENELG SA 5045 AUS | | Weight: 19.46 kg |
| Ref: DWELLING 4 | | Total Weight: 38.91 kg |
| | | Laminations: 1 |



TIMBER / PLATES

| Member | Size | Plating | Restraint |
|--------|--------------------|---------|-----------|
| BC1 | 90x35-MGP10 H0 ADS | JD5 | 600 |
| LEW1 | 90x35-MGP10 H0 ADS | JD5 | |
| TC1 | 90x35-MGP10 H0 ADS | JD5 | 300 |
| W1 | 90x35-MGP10 H0 ADS | JD5 | |
| W2 | 90x35-MGP10 H0 ADS | JD5 | |
| W3 | 90x35-MGP10 H0 ADS | JD5 | |
| W4 | 90x35-MGP10 H0 ADS | JD5 | |
| W5 | 90x35-MGP10 H0 ADS | JD5 | |
| W6 | 90x35-MGP10 H0 ADS | JD5 | |
| W7 | 90x35-MGP10 H0 ADS | JD5 | |
| W8 | 90x35-MGP10 H0 ADS | JD5 | |
| W9 | 90x35-MGP10 H0 ADS | JD5 | |
| REW1 | 90x35-MGP10 H0 ADS | JD5 | |


- 1 more member was not shown -

Vertical Reactions at Supports

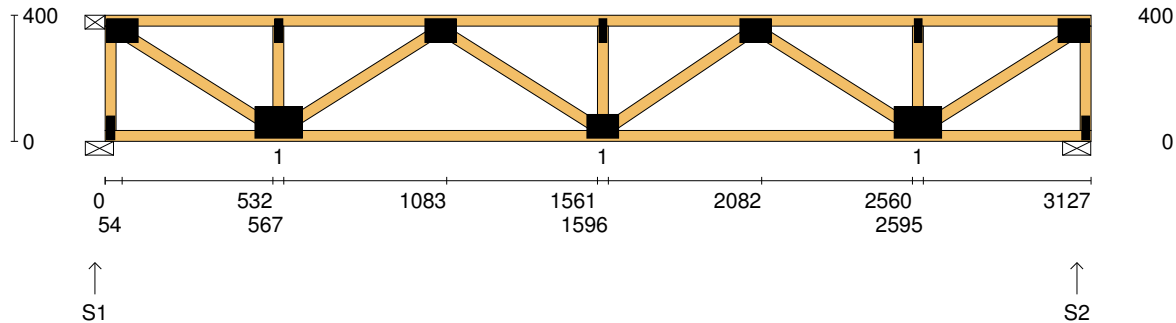
| | S1 | S2 |
|--------------------|------|------|
| 1.35DL (kN) | 0.51 | 0.51 |
| 1.2DL + 1.5LL (kN) | 2.52 | 2.52 |

Joint Nail Plate

| | |
|-------|------------|
| T1 | 75x100-MN |
| BL1 | 25x75-MN |
| B1 | 100x150-MN |
| T2 | 25x75-MN |
| T3 | 75x100-MN |
| B2 | 75x100-MN |
| T4 | 25x75-MN |
| T5 | 75x100-MN |
| B3 | 100x150-MN |
| T6 | 25x75-MN |
| BR1 | 25x75-MN |
| T7 | 75x100-MN |
| BR1-1 | 25x75-MN |

| | | | | | |
|----------------------|---|-----------------------------------|--|---|--|
| Span: 3127 | Floor Material: Particle (15.4 kg/m²) | Application: General Areas | All dimensions in millimetres. This drawing should be read in conjunction with Multinail Technical sheets. Wall plates must be placed at supports only. | Marc Houldsworth (TN-016-020) | |
| Overhang: 0/0 | Floor Covering: Std Carpet + Underlay (8 kg/m²) | Live Load: 1.5 kPa | | Ver: Floor 1.9.3 | |
| Spacing: 600 | Ceiling Material: Plaster 10mm Supa Span (8.2 kg/m²) | Point Load: 1.8 kN |  | Date: 28/05/2018 | |
| Quantity: 2 | Ceiling Fixing: Metal direct @ 600c | Design: AS 1720.1-2010 | | Page: 13 of 20 | |

| | | |
|---|---|-------------------------------|
| Client: D'ANDREA | Trusstech SA Pty Ltd 16 High St., Dry Creek, SA 5094 Joist Name: FT8 Type: SJ 400 Joists: FT16 | Job No: TT09730 |
| Site: 541 ANZAC GLENELG HWY EAST GLENELG SA 5045 AUS | | Weight: 19.14 kg |
| Ref: DWELLING 4 | | Total Weight: 19.14 kg |
| | | Laminations: 1 |



TIMBER / PLATES


| Member | Size | Plating | Restraint |
|--------|--------------------|---------|-----------|
| BC1 | 90x35-MGP10 H0 ADS | JD5 | 600 |
| LEW1 | 90x35-MGP10 H0 ADS | JD5 | |
| TC1 | 90x35-MGP10 H0 ADS | JD5 | 300 |
| W1 | 90x35-MGP10 H0 ADS | JD5 | |
| W2 | 90x35-MGP10 H0 ADS | JD5 | |
| W3 | 90x35-MGP10 H0 ADS | JD5 | |
| W4 | 90x35-MGP10 H0 ADS | JD5 | |
| W5 | 90x35-MGP10 H0 ADS | JD5 | |
| W6 | 90x35-MGP10 H0 ADS | JD5 | |
| W7 | 90x35-MGP10 H0 ADS | JD5 | |
| W8 | 90x35-MGP10 H0 ADS | JD5 | |
| W9 | 90x35-MGP10 H0 ADS | JD5 | |
| REW1 | 90x35-MGP10 H0 ADS | JD5 | |

Vertical Reactions at Supports

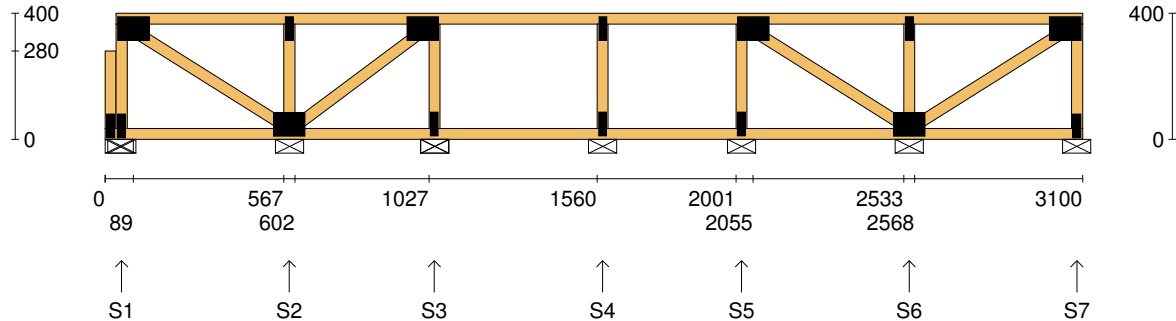
| | S1 | S2 |
|--------------------|------|------|
| 1.35DL (kN) | 0.51 | 0.51 |
| 1.2DL + 1.5LL (kN) | 2.54 | 2.54 |

Joint Nail Plate

| | |
|-----|------------|
| T1 | 75x100-MN |
| BL1 | 25x75-MN |
| B1 | 100x150-MN |
| T2 | 25x75-MN |
| T3 | 75x100-MN |
| B2 | 75x100-MN |
| T4 | 25x75-MN |
| T5 | 75x100-MN |
| B3 | 100x150-MN |
| T6 | 25x75-MN |
| BR1 | 25x75-MN |
| T7 | 75x100-MN |

| | | | | | |
|----------------------|---|-----------------------------------|--|---|--|
| Span: 3127 | Floor Material: Particle (15.4 kg/m²) | Application: General Areas | All dimensions in millimetres. This drawing should be read in conjunction with Multinail Technical sheets. Wall plates must be placed at supports only. | Marc Houldsworth (TN-016-020) | |
| Overhang: 0/0 | Floor Covering: Std Carpet + Underlay (8 kg/m²) | Live Load: 1.5 kPa | | Ver: Floor 1.9.3 | |
| Spacing: 600 | Ceiling Material: Plaster 10mm Supa Span (8.2 kg/m²) | Point Load: 1.8 kN |  | Date: 28/05/2018 | |
| Quantity: 1 | Ceiling Fixing: Metal direct @ 600c | Design: AS 1720.1-2010 | | Page: 14 of 20 | |

| | | |
|---|---|-------------------------------|
| Client: D'ANDREA | Trusstech SA Pty Ltd 16 High St., Dry Creek, SA 5094 Joist Name: FT9 Type: SJ 400 Ladder Joists: FT17 | Job No: TT09730 |
| Site: 541 ANZAC GLENELG HWY EAST GLENELG SA 5045 AUS | | Weight: 18.34 kg |
| Ref: DWELLING 4 | | Total Weight: 18.34 kg |
| | | Laminations: 1 |



TIMBER / PLATES


| Member | Size | Plating | Restraint |
|---------|--------------------|---------|-----------|
| BC1 | 90x35-MGP10 H0 ADS | JD5 | 600 |
| LBlock1 | 90x35-MGP10 H0 ADS | JD5 | |
| LEW1 | 90x35-MGP10 H0 ADS | JD5 | |
| TC1 | 90x35-MGP10 H0 ADS | JD5 | 300 |
| W1 | 90x35-MGP10 H0 ADS | JD5 | |
| W2 | 90x35-MGP10 H0 ADS | JD5 | |
| W3 | 90x35-MGP10 H0 ADS | JD5 | |
| W4 | 90x35-MGP10 H0 ADS | JD5 | |
| W5 | 90x35-MGP10 H0 ADS | JD5 | |
| W6 | 90x35-MGP10 H0 ADS | JD5 | |
| W7 | 90x35-MGP10 H0 ADS | JD5 | |
| W8 | 90x35-MGP10 H0 ADS | JD5 | |
| W9 | 90x35-MGP10 H0 ADS | JD5 | |

- 1 more member was not shown -

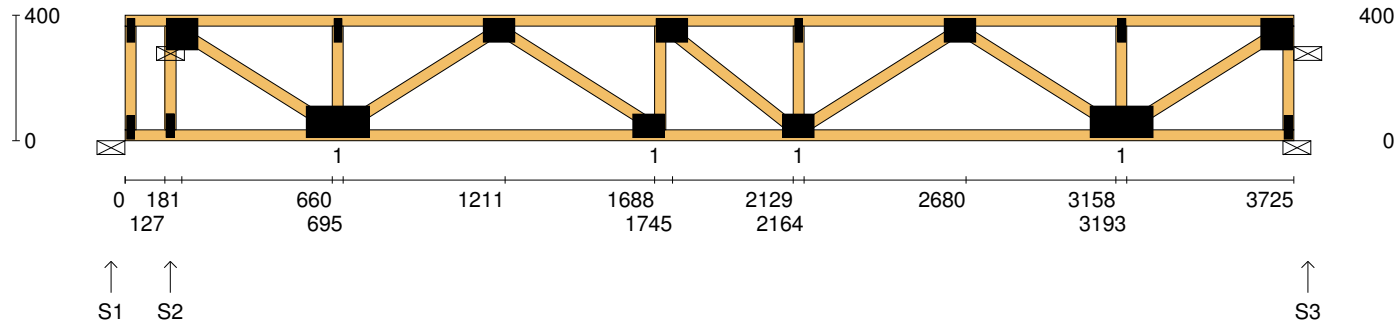
Vertical Reactions at Supports

| | S1 | S2 | S3 | S4 | S5 | S6 | S7 |
|---------------------------|------|------|------|------|------|------|------|
| 1.35DL (kN) | 0.07 | 0.21 | 0.14 | 0.15 | 0.14 | 0.22 | 0.07 |
| 1.2DL + 1.5LL (kN) | 0.31 | 1.07 | 0.69 | 0.81 | 0.67 | 1.13 | 0.30 |

| Joint | Nail Plate | Joint | Nail Plate |
|-------|------------|-------|------------|
| BL1-1 | 25x75-MN | BR1 | 25x75-MN |
| T1 | 75x100-MN | T7 | 75x100-MN |
| BL1 | 25x75-MN | | |
| B1 | 75x100-MN | | |
| T2 | 25x75-MN | | |
| T3 | 75x100-MN | | |
| B2 | 25x75-MN | | |
| T4 | 25x75-MN | | |
| B3 | 25x75-MN | | |
| T5 | 75x100-MN | | |
| B4 | 25x75-MN | | |
| B5 | 75x100-MN | | |
| T6 | 25x75-MN | | |

| | | | | |
|----------------------|---|-----------------------------------|--|---|
| Span: 3100 | Floor Material: Particle (15.4 kg/m²) | Application: General Areas | All dimensions in millimetres. This drawing should be read in conjunction with Multinail Technical sheets. Wall plates must be placed at supports only. | Marc Houldsworth (TN-016-020) |
| Overhang: 0/0 | Floor Covering: Std Carpet + Underlay (8 kg/m²) | Live Load: 1.5 kPa | | Ver: Floor 1.9.3 |
| Spacing: 600 | Ceiling Material: Plaster 10mm Supa Span (8.2 kg/m²) | Point Load: 1.8 kN |  | Date: 28/05/2018 |
| Quantity: 1 | Ceiling Fixing: Metal direct @ 600c | Design: AS 1720.1-2010 | | Page: 15 of 20 |

| | | |
|---|--|-------------------------------|
| Client: D'ANDREA | Trusstech SA Pty Ltd 16 High St., Dry Creek, SA 5094 Joist Name: FT10 Type: SJ 400 Joists: FT19 | Job No: TT09730 |
| Site: 541 ANZAC GLENELG HWY EAST GLENELG SA 5045 AUS | | Weight: 23.45 kg |
| Ref: DWELLING 4 | | Total Weight: 23.45 kg |
| | | Laminations: 1 |



TIMBER / PLATES


| Member | Size | Plating | Restraint |
|--------|--------------------|---------|-----------|
| BC1 | 90x35-MGP10 H0 ADS | JD5 | 600 |
| LEW1 | 90x35-MGP10 H0 ADS | JD5 | |
| TC1 | 90x35-MGP10 H0 ADS | JD5 | 300 |
| W1 | 90x35-MGP10 H0 ADS | JD5 | |
| W2 | 90x35-MGP10 H0 ADS | JD5 | |
| W3 | 90x35-MGP10 H0 ADS | JD5 | |
| W4 | 90x35-MGP10 H0 ADS | JD5 | |
| W5 | 90x35-MGP10 H0 ADS | JD5 | |
| W6 | 90x35-MGP10 H0 ADS | JD5 | |
| W7 | 90x35-MGP10 H0 ADS | JD5 | |
| W8 | 90x35-MGP10 H0 ADS | JD5 | |
| W9 | 90x35-MGP10 H0 ADS | JD5 | |
| W10 | 90x35-MGP10 H0 ADS | JD5 | |

- 3 more members were not shown -

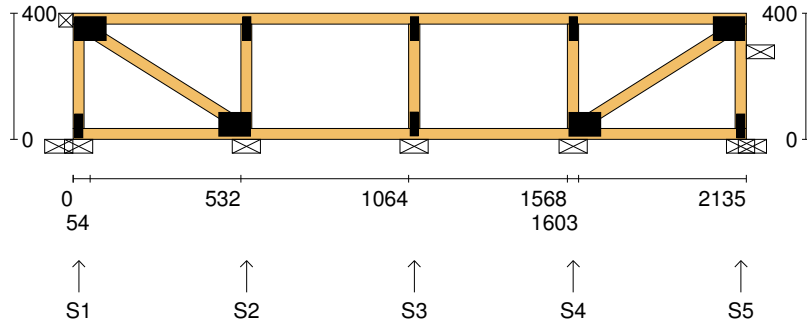
Vertical Reactions at Supports

| | S1 | S2 | S3 |
|--------------------|-------|------|------|
| 1.35DL (kN) | -0.09 | 0.73 | 0.59 |
| 1.2DL + 1.5LL (kN) | -0.55 | 3.72 | 2.91 |

| Joint | Nail Plate | Joint | Nail Plate |
|-------|------------|-------|------------|
| TL1 | 25x75-MN | T7 | 25x75-MN |
| BL2 | 25x75-MN | BR1 | 25x75-MN |
| T1 | 100x100-MN | T8 | 100x100-MN |
| B1 | 25x75-MN | | |
| B2 | 100x200-MN | | |
| T2 | 25x75-MN | | |
| T3 | 75x100-MN | | |
| B3 | 75x100-MN | | |
| T4 | 75x100-MN | | |
| B4 | 75x100-MN | | |
| T5 | 25x75-MN | | |
| T6 | 75x100-MN | | |
| B5 | 100x200-MN | | |

| | | | | | |
|----------------------|---|-----------------------------------|--|---|--------------------|
| Span: 3725 | Floor Material: Particle (15.4 kg/m²) | Application: General Areas | All dimensions in millimetres. This drawing should be read in conjunction with Multinail Technical sheets. Wall plates must be placed at supports only. | Marc Houldsworth (TN-016-020) | |
| Overhang: 0/0 | Floor Covering: Std Carpet + Underlay (8 kg/m²) | Live Load: 1.5 kPa | | Ver: | Floor 1.9.3 |
| Spacing: 600 | Ceiling Material: Plaster 10mm Supa Span (8.2 kg/m²) | Point Load: 1.8 kN |  | Date: | 28/05/2018 |
| Quantity: 1 | Ceiling Fixing: Metal direct @ 600c | Design: AS 1720.1-2010 | | Page: | 16 of 20 |

| | | |
|---|--|-------------------------------|
| Client: D'ANDREA | Trusstech SA Pty Ltd 16 High St., Dry Creek, SA 5094 Joist Name: FT11 Type: SJ 400 Ladder Joists: FT21 | Job No: TT09730 |
| Site: 541 ANZAC GLENELG HWY EAST GLENELG SA 5045 AUS | | Weight: 11.87 kg |
| Ref: DWELLING 4 | | Total Weight: 11.87 kg |
| | | Laminations: 1 |



TIMBER / PLATES


| Member | Size | Plating | Restraint |
|--------|--------------------|---------|-----------|
| BC1 | 90x35-MGP10 H0 ADS | JD5 | 600 |
| LEW1 | 90x35-MGP10 H0 ADS | JD5 | |
| TC1 | 90x35-MGP10 H0 ADS | JD5 | 300 |
| W1 | 90x35-MGP10 H0 ADS | JD5 | |
| W2 | 90x35-MGP10 H0 ADS | JD5 | |
| W3 | 90x35-MGP10 H0 ADS | JD5 | |
| W4 | 90x35-MGP10 H0 ADS | JD5 | |
| W5 | 90x35-MGP10 H0 ADS | JD5 | |
| REW1 | 90x35-MGP10 H0 ADS | JD5 | |

Vertical Reactions at Supports

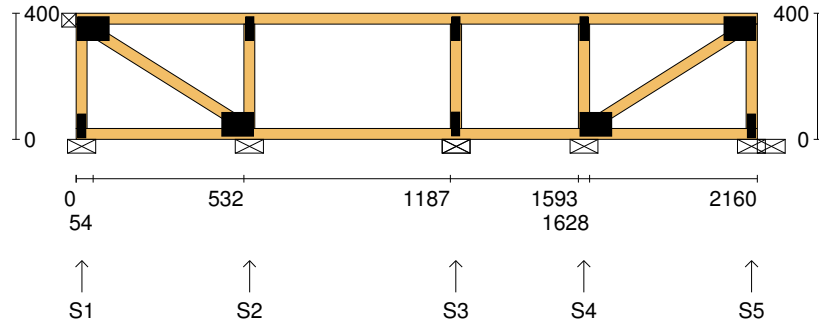
| | S1 | S2 | S3 | S4 | S5 |
|--------------------|------|------|------|------|------|
| 1.35DL (kN) | 0.07 | 0.20 | 0.15 | 0.19 | 0.07 |
| 1.2DL + 1.5LL (kN) | 0.33 | 1.02 | 0.77 | 0.99 | 0.33 |

Joint Nail Plate

| | |
|-----|-----------|
| T1 | 75x100-MN |
| BL1 | 25x75-MN |
| B1 | 75x100-MN |
| T2 | 25x75-MN |
| T3 | 25x75-MN |
| B2 | 25x75-MN |
| B3 | 75x100-MN |
| T4 | 25x75-MN |
| BR1 | 25x75-MN |
| T5 | 75x100-MN |

| | | | | | |
|----------------------|---|-----------------------------------|--|---|--------------------|
| Span: 2135 | Floor Material: Particle (15.4 kg/m²) | Application: General Areas | All dimensions in millimetres. This drawing should be read in conjunction with Multinail Technical sheets. Wall plates must be placed at supports only. | Marc Houldsworth (TN-016-020) | |
| Overhang: 0/0 | Floor Covering: Std Carpet + Underlay (8 kg/m²) | Live Load: 1.5 kPa | | Ver: | Floor 1.9.3 |
| Spacing: 600 | Ceiling Material: Plaster 10mm Supa Span (8.2 kg/m²) | Point Load: 1.8 kN |  | Date: | 28/05/2018 |
| Quantity: 1 | Ceiling Fixing: Metal direct @ 600c | Design: AS 1720.1-2010 | | Page: | 17 of 20 |

| | | |
|---|---|-------------------------------|
| Client: D'ANDREA | Trusstech SA Pty Ltd 16 High St., Dry Creek, SA 5094 Joist Name: FT12 Type: SJ 400 Ladder Joists: FT23 | Job No: TT09730 |
| Site: 541 ANZAC GLENELG HWY EAST GLENELG SA 5045 AUS | | Weight: 11.95 kg |
| Ref: DWELLING 4 | | Total Weight: 11.95 kg |
| | | Laminations: 1 |



TIMBER / PLATES


| Member | Size | Plating | Restraint |
|--------|--------------------|---------|-----------|
| BC1 | 90x35-MGP10 H0 ADS | JD5 | 600 |
| LEW1 | 90x35-MGP10 H0 ADS | JD5 | |
| TC1 | 90x35-MGP10 H0 ADS | JD5 | 300 |
| W1 | 90x35-MGP10 H0 ADS | JD5 | |
| W2 | 90x35-MGP10 H0 ADS | JD5 | |
| W3 | 90x35-MGP10 H0 ADS | JD5 | |
| W4 | 90x35-MGP10 H0 ADS | JD5 | |
| W5 | 90x35-MGP10 H0 ADS | JD5 | |
| REW1 | 90x35-MGP10 H0 ADS | JD5 | |

Vertical Reactions at Supports

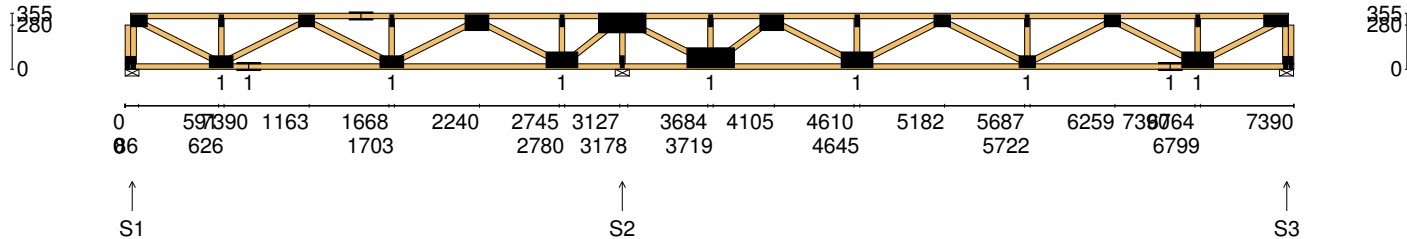
| | S1 | S2 | S3 | S4 | S5 |
|---------------------------|------|------|------|------|------|
| 1.35DL (kN) | 0.07 | 0.22 | 0.16 | 0.17 | 0.08 |
| 1.2DL + 1.5LL (kN) | 0.30 | 1.14 | 0.83 | 0.86 | 0.35 |

Joint Nail Plate

| | |
|-----|-----------|
| T1 | 75x100-MN |
| BL1 | 25x75-MN |
| B1 | 75x100-MN |
| T2 | 25x75-MN |
| T3 | 25x75-MN |
| B2 | 25x75-MN |
| B3 | 75x100-MN |
| T4 | 25x75-MN |
| BR1 | 25x75-MN |
| T5 | 75x100-MN |

| | | | | | |
|----------------------|---|-----------------------------------|--|---|--------------------|
| Span: 2160 | Floor Material: Particle (15.4 kg/m²) | Application: General Areas | All dimensions in millimetres. This drawing should be read in conjunction with Multinail Technical sheets. Wall plates must be placed at supports only. | Marc Houldsworth (TN-016-020) | |
| Overhang: 0/0 | Floor Covering: Std Carpet + Underlay (8 kg/m²) | Live Load: 1.5 kPa | | Ver: | Floor 1.9.3 |
| Spacing: 600 | Ceiling Material: Plaster 10mm Supa Span (8.2 kg/m²) | Point Load: 1.8 kN |  | Date: | 28/05/2018 |
| Quantity: 1 | Ceiling Fixing: Metal direct @ 600c | Design: AS 1720.1-2010 | | Page: | 18 of 20 |

| | | |
|---|--|-------------------------------|
| Client: D'ANDREA | Trusstech SA Pty Ltd 16 High St., Dry Creek, SA 5094 Joist Name: FT13 Type: SJ 355 Joists: FT24 | Job No: TT09730 |
| Site: 541 ANZAC GLENELG HWY EAST GLENELG SA 5045 AUS | | Weight: 45.61 kg |
| Ref: DWELLING 4 | | Total Weight: 45.61 kg |
| | | Laminations: 1 |



TIMBER / PLATES

| Member | Size | Plating | Restraint |
|---------|--------------------|---------|-----------|
| BC1 | 90x35-MGP10 H0 ADS | JD5 | 600 |
| LBlock1 | 90x35-MGP10 H0 ADS | JD5 | |
| LEW1 | 90x35-MGP10 H0 ADS | JD5 | |
| TC1 | 90x35-MGP10 H0 ADS | JD5 | 300 |
| W1 | 90x35-MGP10 H0 ADS | JD5 | |
| W2 | 90x35-MGP10 H0 ADS | JD5 | |
| W3 | 90x35-MGP10 H0 ADS | JD5 | |
| BC2 | 90x35-MGP10 H0 ADS | JD5 | 600 |
| W4 | 90x35-MGP10 H0 ADS | JD5 | |
| TC2 | 90x35-MGP10 H0 ADS | JD5 | 300 |
| W5 | 90x35-MGP10 H0 ADS | JD5 | |
| W6 | 90x35-MGP10 H0 ADS | JD5 | |
| W7 | 90x35-MGP10 H0 ADS | JD5 | |


- 18 more members were not shown -

Vertical Reactions at Supports

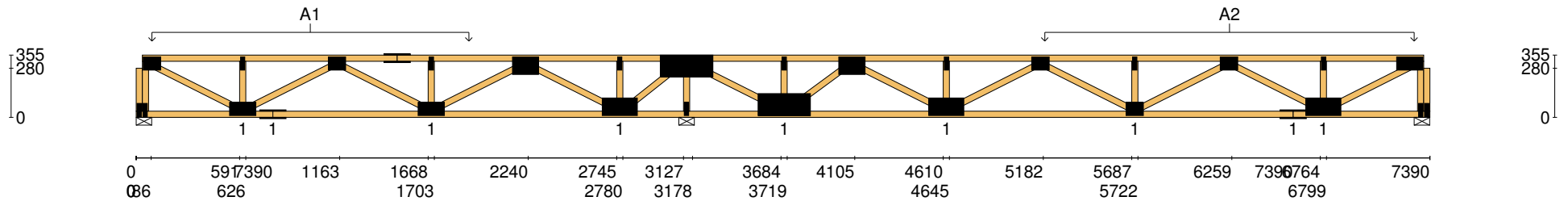
| | S1 | S2 | S3 |
|--------------------|------|------|------|
| 1.35DL (kN) | 0.50 | 1.75 | 0.78 |
| 1.2DL + 1.5LL (kN) | 1.80 | 7.74 | 2.99 |

| Joint | Nail Plate | Joint | Nail Plate |
|-------|------------|-------|------------|
| BL1-1 | 25x75-MN | T8 | 125x300-MN |
| T1 | 75x100-MN | B5 | 25x75-MN |
| BL1 | 25x75-MN | B6 | 125x300-MN |
| B1 | 75x150-MN | T9 | 25x75-MN |
| T2 | 25x75-MN | T10 | 100x150-MN |
| B2 | 75x150-MN | B7 | 100x200-MN |
| T3 | 75x100-MN | T11 | 25x75-MN |
| T4 | 75x150-MN | T12 | 75x100-MN |
| B3 | 75x150-MN | B8 | 75x100-MN |
| T5 | 25x75-MN | T13 | 25x75-MN |
| T6 | 100x150-MN | T14 | 75x100-MN |
| B4 | 100x200-MN | B9 | 75x150-MN |
| T7 | 25x75-MN | BR1-1 | 25x75-MN |

- 4 more nail plates were not shown -


| | | | | | |
|----------------------|--|-----------------------------------|--|---|--|
| Span: 7390 | Floor Material: Particle (15.4 kg/m²) | Application: General Areas | All dimensions in millimetres. This drawing should be read in conjunction with Multinail Technical sheets. Wall plates must be placed at supports only. | Marc Houldsworth (TN-016-020) | |
| Overhang: 0/0 | Floor Covering: Std Carpet + Underlay (8 kg/m²) | Live Load: 1.5 kPa | | Ver: Floor 1.9.3 | |
| Spacing: 600 | Ceiling Material: Plaster 10mm Supa Span (8.2 kg/m²) | Point Load: 1.8 kN |  | Date: 28/05/2018 | |
| Quantity: 1 | Ceiling Fixing: Metal direct @ 600c | Design: AS 1720.1-2010 | | Page: 19 of 20 | |

| | | |
|---|--|-------------------------------|
| Client: D'ANDREA | Trusstech SA Pty Ltd 16 High St., Dry Creek, SA 5094 | Job No: TT09730 |
| Site: 541 ANZAC GLENELG HWY EAST GLENELG SA 5045 AUS | | Weight: 45.61 kg |
| Ref: DWELLING 4 | Joist Name: FT13 Type: SJ 355 Joists: FT24 | Total Weight: 45.61 kg |
| | | Laminations: 1 |



| | | |
|-----------------------|-------------------------|-------------------------|
| User Def. Load | A1 | A2 |
| | 43.50 kg/m ² | 43.50 kg/m ² |

Applied Load
DL (kN)
LL (kN)
WL Up (kN)
WL Dn (kN)

| | | | | |
|----------------------|--|-----------------------------------|--|---|
| Span: 7390 | Floor Material: Particle (15.4 kg/m²) | Application: General Areas | All dimensions in millimetres. This drawing should be read in conjunction with Multinail Technical sheets. Wall plates must be placed at supports only. | Marc Houldsworth (TN-016-020) |
| Overhang: 0/0 | Floor Covering: Std Carpet + Underlay (8 kg/m²) | Live Load: 1.5 kPa | | Ver: Floor 1.9.3 |
| Spacing: 600 | Ceiling Material: Plaster 10mm Supa Span (8.2 kg/m²) | Point Load: 1.8 kN |  | Date: 28/05/2018 |
| Quantity: 1 | Ceiling Fixing: Metal direct @ 600c | Design: AS 1720.1-2010 | | Page: 20 of 20 |